

**IN THE SUPERIOR COURT OF THE STATE OF ARIZONA
IN AND FOR THE COUNTY OF MARICOPA**

IN THE MATTER OF THE APPOINTMENT OF A)	ADMINISTRATIVE ORDER
DEVELOPMENT COMMITTEE FOR A JUSTICE)	NO. 2010-076
MUSEUM AND LEARNING CENTER AT THE)	
HISTORIC MARICOPA COUNTY COURTHOUSE)	(Vacates and Supersedes
)	Administrative Order No.
)	2004-116)
)	

Whereas, the Superior Court of Arizona in Maricopa County desires to develop a Justice Museum and Learning Center at the Historic Maricopa County Courthouse in Phoenix, Arizona, dedicated to educating the public about the Rule of Law, the important roles of law enforcement, public and private lawyers, courts, city/county/state government, the corrections system, and famous cases and events in Arizona legal history, and famous cases and events in Arizona legal history; and

Whereas, a principal objective in the creation and operation of such a facility is that it be privately funded through donations from the public in the spirit of a community project compatible functionally and aesthetically with court programs carried on in the building; and

Whereas, the Code of Judicial Ethics and collateral rules and directives promulgated by the Arizona Supreme Court governing the conduct and behavior of judges and court staff prohibit judicial officers and court employees from direct or indirect involvement in the solicitation and expenditure of donated funds for court-related purposes; and

Whereas, the vision, goals, objectives, and quality of the Justice Museum and Learning Center as contemplated by Court leadership, officials at the ABA Museum of Law (design consultants for the Museum), Maricopa County Government officials, guidelines of the Historical Commission and potential donors requires strong oversight and management in the form of a permanent organization charged with the fund-raising, promotion and operation of the Museum and Learning Center, and

Whereas, under the leadership of the Maricopa County Bar Association, the Maricopa County Justice Museum and Learning Center Foundation ("the Justice Museum Foundation") has been incorporated as a nonprofit tax-exempt corporation, with the stated purpose of promoting and assisting with the development, planning and operation of the Justice Museum and Learning Center, and

Whereas, the Justice Museum Foundation, which has a Board of Directors that includes former Judge Colin Campbell and other individuals who have demonstrated a long term commitment to the Justice Museum and Learning Center, is willing to serve as a permanent oversight and management organization for the Museum and Learning Center,

IT IS HEREBY ORDERED that the Justice Museum Foundation is authorized to secure funds, create work groups, and otherwise advance the construction and programming of a Justice Museum and Learning Center at the Historic Maricopa County Courthouse in Phoenix, Arizona; and

IT IS FURTHER ORDERED that the Maricopa County Justice Museum and Learning Center Foundation is authorized on behalf of the Judicial Branch in Maricopa County to engage in all activities related to the creation and management of this Justice Museum and Learning Center at the Historic Maricopa County Courthouses in Phoenix, Arizona; and

IT IS FURTHER ORDERED that Administrative Order No. 2004-116 is vacated and superseded by this Order; and

IT IS FURTHER ORDERED that this Administrative Order expires automatically without further Order on a date ten (10) years from the date of issuance in accordance with Arizona Administrative Code, Section 3-402(C), unless sooner modified, amended or replaced.

Dated this 8th day of July, 2010.

Norman J. Davis
Presiding Judge

Original: Clerk of the Superior Court

Copies: Chief Justice Rebecca White Berch
Chairman Donald Stapley, Board of Supervisors
David K. Byers, Director of the Administrative Office of the courts
David R. Smith, County Administrator
Marcus Reinkensmeyer, Judicial Branch Administrator
Colin Campbell, President, Maricopa County Justice Museum and Learning Center Foundation
Thomas K. Irvine
Gordon M. Griller





swan
architects, inc.
 4331 north 12th street
 Phoenix, arizona 85014
 tel: 602-264-3083
 fax: 602-274-7658
 www.swanarchitects.com

November 24, 2009

Laurie Williams
 CLE Director

Re: Justice Museum at the Maricopa County Old Courthouse

We would be pleased to provide architectural and engineering services as required to rehabilitate the historic Old Courthouse jail cells for adaptive reuse as the Justice Museum. We have identified the probable services anticipated for this undertaking and our proposed fees.

PHASE I

Programming – Assist the Justice Museum Facilities Committee and Maricopa Facilities Management Department with the development of a phased program that clearly illustrates the goals and plans necessary to rehabilitate the Old Courthouse jail cells for adaptive reuse as the Justice Museum. Prepare probable cost estimates which can be used to plan for future phases/expenditures.

Architect – No charge
 CADD – No charge

Code Analysis – Prepare code analysis, exit plan, and similar items to confirm proposed program meets applicable building, life, and fire safety codes. Meet with the Maricopa County Development Services Department and the City of Phoenix Fire Department to discuss the need for variances to the codes. Emergency egress will be the most critical issue, especially if the original cell doors become operational.

Architect – No charge
 CADD – No charge

Preliminary Design – Prepare conceptual floor plans, interior elevations, and other drawings necessary to clearly illustrate the design and phasing plans. Attend four design meetings with the Justice Museum Facility Committee and/or Facilities Management Department representatives.

Architect – 8 hrs @ \$110/hr	\$880.00
CADD – 8 hrs @ \$45/hr	360.00

Construction Documents – Prepare drawings and specifications which clearly explain the rehabilitation measures and conform with Maricopa County building, life, and fire safety codes and the Americans with Disabilities Act. Evaluate existing mechanical and electrical systems and design upgrades required to meet current codes and programmed requirements.

Architect - 40 hrs @ \$110/hr	\$ 4,400.00
Architectural CADD - 40 hrs @ \$45/hr	1,800.00
Mechanical Engineer - 6 hrs @ \$110/hr	660.00
Electrical Engineering - 6 hrs @ \$110/hr	660.00
Engineering CADD - 12 hrs @ \$45/hr	540.00

Justice Museum at the Maricopa County Old Courthouse

November 24, 2009

Page - 2

Bidding – Assist Justice Museum Facility Committee and/or Maricopa Facilities Management Department with the preparation and distribution of documents necessary to obtain competitive bids from qualified contractors. Respond to contractors' questions, prepare addenda, attend pre-bid meeting(s), analyze bids, recommend award, and assist with the preparation of contracts.

Architect – 8 hrs @ \$110/hr = \$ 880.00

Construction Administration – Attend weekly (or as necessary) meetings at the project site, respond to the contractor's requests for information, interpret contract documents, verify work is in accordance with contract documents, integrate Owner changes, review contractor's payment applications, and closeout documents.

(Based on a 10-week rehabilitation period)

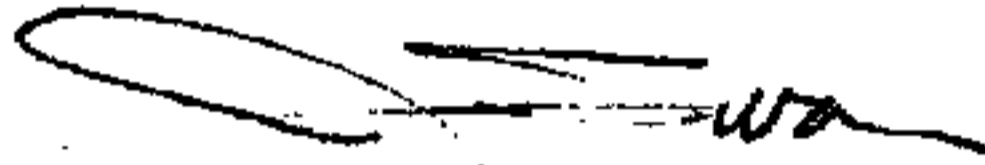
Architect – 40 hrs @ \$110/hr = \$4,400.00

Mechanical Engineer – 4 hrs @ \$110/hr = 440.00

Electrical Engineer – 4 hrs @ \$0/hr = 440.00

The proposal is based on the limited information we received at the October 27th meeting. We have reduced our standard hourly rates and the number of hours anticipated on this exciting project. Further cost savings may be realized once the program/ preliminary design is more clearly defined. If you have any questions do not hesitate to call.

Sincerely,



Jeffrey A. Swan, AIA
President

Re: Justice Museum at the Maricopa Old Courthouse

Team, please respond to the following questions or assumptions that we have made in absence of a detailed program.

1. **Exterior double-hung steel window restoration/rehabilitation** will include replacing the exterior historic glass with replica or similar translucent-patterned glass. An interior nonoriginal casement window will be placed on the interior side of the original steel double-hung windows and consists of a narrow aluminum frame and sash with clear insulated laminate glass to improve energy efficiency, reduce sound transmission, and prevent ultraviolet light from damaging the exhibitry. The costs associated with this design will exceed the previously prepared probable costs.
2. **Interior steel windows** will be restored to their original condition.
 - A. Is there any desire to place clear glass in one of the interior steel windows so visitors can view the original "fresh air"/light court?
3. **Jail cell rehabilitation/renovation**
 - A. Currently the Justice Museum plan includes restoring jail cells #1 and #2 to their original condition except for removing portions of the steel plate partitions to create openings that will enhance the circulation path or flow through the museum. There will be a surplus of salvaged steel bunks and bars left over. Do you want these items stored off-site or disposed of?
 - B. Has it been determined whether a museum/exhibitry designer is needed? If yes, will the Bar select and contract separately with a museum specialist or would you like Swan Architects to obtain fee proposals from three firms for your consideration? We would recommend the later to ensure continuity and coordination of all building systems and to maintain one point of contact between the Bar, FMD, Superior Courts, and the Architect.
 - C. Has there been any further discussions on a program or types of exhibitry?
 - D. Is it desirable to reestablish the original visitors room which is accessible only from the main corridor? It may be possible to provide a "window" or an interesting glimpse through this space into the Justice Museum from the corridor.
 - E. Do you want to restore the shower at the end of the jail corridor?
 - F. Do you want to recreate the day room furniture (table and stools) based on the original drawings?
 - G. Do you want to paint the jail cells with original paint color which appears to contain a gold/brown hue? If yes, do you want the finish to appear worn and faded?
 - H. Do you want to lightly grind the concrete slab to expose the large aggregate?
 - I. We intend on removing the plumbing fixtures and mechanical chase in cells #3 and #4 to create flexible exhibit space unless directed otherwise.
 - J. The main jail entrance door that leads from the elevator lobby to the cells is approximately 24 inches wide. In order to create an accessible route one of the following two options should be selected.
 - 1) Replace the steel door with a 32-inch-wide replica steel door that complies with accessibility and building codes.
 - 2) Create an accessible opening (32 inches wide) south of the original entrance door that has minimal hardware and is not discernable from the original solid steel plate partition.

- K. The secondary jail exit that leads directly to the main corridor also is not accessible and will require significant alterations if the final plan dictates all visitors are required to exit through this opening. These alterations can be avoided if the accessible main entrance is also acceptable as an exit.
4. **The mechanical door operator** can be repaired to control the 18-inch-wide cell doors. However, there are some liability concerns that should be considered.
- A. Obviously, there is no mechanism which limits the steel doors from closing tightly. One option may be to alter the door mechanism(s) so they will not fully close. A two- to three-inch gap between the jamb and door would minimize accidents. Another option would be to fix the doors in the open positions. Which option is preferred?
- B. The leading edge of the door operator's overhead enclosure (located in the cell corridor) is located below 74 inches creating a hazard for taller visitors. Applying warning markings will minimize the hazard but will be a distraction from the original jail cell ambiance. If the cell doors are not operational would you prefer that we remove or alter the height of the enclosure to eliminate this hazard?
5. **Existing mechanical / HVAC system** – There is adequate capacity to cool the jail cells and elevator lobby, however, there are no return air ducts from the conditioned spaces back to the fan coil unit located below the roof. Without these ducts we cannot adequately cool these areas. Swan has requested a mechanical engineering firm to provide a proposal to prepare the necessary drawings and specifications for the installation of these ducts.
6. **Existing electrical systems** – There is adequate emergency and normal power for future museum improvements located in the electrical room adjacent to the 6th floor elevator lobby. There is no electrical work currently planned in the infrastructure phase. If desired, we could restore the original ceramic light sockets to replicate the original lighting conditions and/or install a flexible minimalist lighting system below the steel plate ceiling which would accommodate a wide variety of future exhibitry. Exact locations for receptacles should be determined prior to preparing the design documents.
7. **Building Code Issues**
- A. Swan will confirm that the existing mechanical chases are not required to be fire-resistant self-enclosures.
- B. Swan will confirm if the interior steel windows adjacent to the east exit stairway enclosure must be 2-hour, fire-resistive or equipped with automatic fire shutters.
- C. Swan will confirm the requirements for the maximum door pressure allowed for openings in the exit passageway.
8. **FMD Coordination Issues**
- A. Should Swan design or assist with the installation of a rainwater diverter below the leaking roof now before the anticipated spring showers damage the 5th floor Judges' offices?
- B. Should a contractor be selected now based on qualifications so they can establish or confirm cost estimates, schedules, submittals, etc. prior to the July construction start date or will it be conventionally bid 2 to 3 months prior to the construction start date?
- C. Is there any funds currently available to order some of the long lead time materials such as the translucent pattern glass prior to July construction start date?

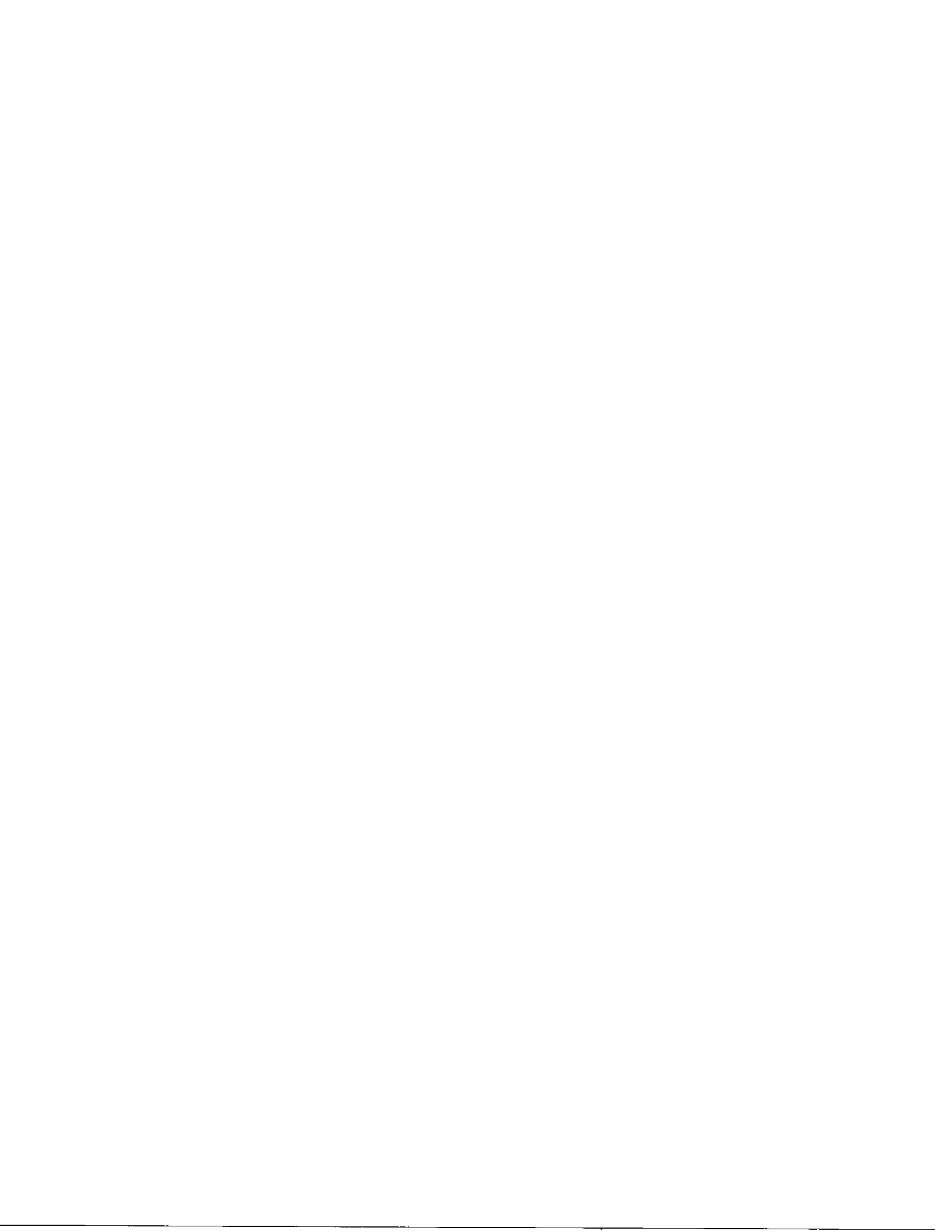
Justice Museum at the Maricopa County Old Courthouse

Phase I – Infrastructure Improvements

1. **Rehabilitate Exterior Steel Windows**
 - a. secure/fix windows in closed position
 - b. glazing – replicate original
2. **Prevent Water Infiltration**
 - a. install temporary drain tarps/leak diverters below roof/above jail cells
3. **Selective Demolition/Steel Rehabilitation**
 - a. remove and relocate specific steel plate partitions
 - b. remove or relocate specific steel bunks and bars
 - c. remove specific plumbing fixtures
4. **Mechanical Improvements**
 - a. analyze heating loads based on anticipated occupancy and lighting systems
 - b. test and balance existing system
5. **Electrical Improvements**
 - a. replace original light sockets with similar fixtures that have shielded lamps
6. **Accessibility**
 - a. remove barriers on the accessible route.
 - b. patch concrete slabs after removal of steel partitions
7. **Exiting/Security**
 - a. alter original steel exit doors to open from the interior side without the use of a key or special knowledge

The following selective demolition and rehabilitation measures are necessary to weatherproof the jail cells and create suitable/safe conditions for occupancy and future museum improvements.

Phase I – Infrastructure Probable Costs	
Window rehabilitation	\$ 24,000.00
Drain tarp installation	\$ 2,000.00
Steel rehabilitation work	\$ 25,000.00
Concrete patching	\$ 3,400.00
Mechanical test and balance/adjustments	\$ 3,000.00
Electrical lighting	\$ 6,000.00
Miscellaneous cleaning/finishing	\$ 5,000.00
Subtotal:	\$ 68,400.00
Contingency (20%)	\$ 13,680.00
Subtotal:	\$ 82,080.00
General Conditions Contractor's Fee (18%)	\$ 14,774.40
Sales Tax, Bonds, Insurance (7%)	\$ 5,745.60
Total Probable Infrastructure Costs:	\$ 102,600.00





EDE Corporation
3740 West 74th Street
Chicago, Illinois 60629

T: 773.565.6603
F: 773.596.8601
www.edecorp.com

November 3, 2011

PROPOSAL

CLIENT: Maricopa County Justice Museum and Learning Center Foundation
303 East Palm Lane
Pheonix, AZ 85004

CONTACT: Norman Gross
(928) 282-0079
Gross.norman@gmail.com

PROJECT: Maricopa County Courthouse

EDE Corporation agrees to provide the following in cooperation with Teller|Madsen Design :

Introduction Lobby

- Provide two 2' wide x 3' tall wall-mounted graphic panels
 - o One for donors
 - o One for introduction to museum exhibit
- Provide lettering for museum name mounted onto wall

Introduction Lobby..... \$2,500.00

Test Your Trial IQ

- Provide 5 wall-mounted interactive graphic panels and one wall-mounted introductory panel

Test Your Trial IQ..... \$5,000.00

Jail Areas

- Provide 6 standard size* wall-mounted graphic panels to be placed throughout the two restored jail cells.

Jail Areas \$3,000.00

Rights of the Accused

- Provide 10 various standard sized*, wall-mounted graphic panels

Rights of the Accused \$5,000.00

Marching for Justice

- Provide 10 various standard sized*, wall-mounted graphic panels

Marching for Justice \$5,000.00

Timeline Wall

- Create 36 various standard sized*, graphic panels for the timeline corridor

Timeline Wall \$12,000.00

Design Development

- EDE will partner with Teller|Madsen Design to design and develop the spaces for the courthouse.
- Teller|Madsen will be responsible for creation and layout of all graphic files ready for production**

Design Development see proposal from Teller|Madsen

Installation

- Deliver and install exhibit components at Maricopa County Courthouse in Phoenix, Arizona.

Installation..... \$9,530.00

* Standard sized graphic panels are defined as graphic panels measuring approximately 2' x 2' to up to 4' x 4'. Anything sized beyond those measurements would be classified as oversized and therefore be priced differently than quoted. This quote reflects an overall total of graphic panels estimated, and panels can be moved from group to group without changes in overall cost.

** Please note that the graphics layouts do not include the cost to purchase images. This cost cannot be estimated, and is therefore outside of the scope of the design development and will be purchased by Maricopa County Courthouse officials.

*****Project Grand Total \$42,030*****

***This price is a final price not to exceed. EDE will continue to work on slight design modifications to achieve this total. Any changes will be discussed with Maricopa County Courthouse and verified that they are approved.

Terms and Conditions

Contract Validity Date: This contract is valid until November 10th 2011. EDE must have a signed copy of this quotation by this date or additional charges may be incurred.

All renderings / sketches provided are deemed the intellectual property of EDE Corporation until a signed contract from the client is received. Using any / all part of the drawings without EDE's written consent is forbidden.

The Project and Graphics portion of this contract is a not to exceed quote, and will not be changed, except for additional changes not specified in this contract.

Cancellations:

- Should this Agreement be cancelled by the Buyer for any reason, including Acts of War, Acts of God or any other reason regardless of nature or circumstance, the Buyer agrees to compensate the Seller and it's agents for any and all costs incurred on the Buyer's behalf related to their exhibit properties, components and services up to and including the date of such cancellation.
- The Seller may cancel this Agreement should the Order to Proceed, deposit, artwork, or other needs of the Seller not be fulfilled in a timely manner. Artwork must be received within thirty (30) days of project completion or rush charges may be incurred.
- Should the Buyer cancel a multiple show Agreement, the Buyer will be responsible for all damages, profit and costs spread through the time of the Agreement
- Should the Seller need to cancel the Agreement due to Acts of War, Acts of God, union strike or for any other reason beyond the Seller's control, the Buyer will not hold the Seller responsible for any damages that may result.

Title:

- Purchased items sold hereunder shall pass from Seller to Buyer upon payment of all monies owed Seller. Seller shall retain a security interest in the merchandise until Buyer has paid the full cost of such merchandise.

Deliveries:

- Buyer shall notify Seller of full details as to description and shipping delivery dates and places. All prices quoted herein are FOB place of manufacturer, except where noted.
- Seller shall not be liable to Buyer for any damages resulting from and delay in delivery of the merchandise or materials or services in producing this product.
- The Buyer shall be responsible for any rush charges incurred by the Seller due to nonpayment, late artwork, or changes/additions made by the Buyer.

Taxes:

- Taxes shall be the responsibility of the Buyer if applicable.

Payment Terms and Conditions:

- Teller|Madsen will be paid through their contract with the Maricopa County Courthouse
- 50% of the total is due upon award of the contract, and the balance due prior to shipping.
- Production will not begin until the signature page and method of payment form is complete.
- Any additional invoices are due upon receipt, net 30.
- Invoices not in dispute must be paid within thirty (30) days after scheduled date and will be subject to a monthly 2% late fee. All late invoices will be then charged on the Buyers credit card.
- All credit card charges will be charged a 4% convenience fee.
- Any onsite changes/additions will be charged at time of signature. We require a credit card to be on file for these charges, should they arise.

November 2, 2011

ORDER TO PROCEED

As an authorized representative of Maricopa County Justice Museum and Learning Center Foundation, I authorize EDE Corporation to proceed with the construction of the exhibit for Maricopa County Courthouse. I agree with the listed specifications, the terms and conditions, pricing and payment requirements as described in this Agreement. I acknowledge that this Agreement supersedes all previous Agreements and/or renderings and that only the items stated are included.

*****Project Grand Total \$42,030*****

**Submitted by:
EDE Corporation**

**Accepted by:
Maricopa County Justice Museum and
Learning Center Foundation**

Greg Tivadar

METHOD OF PAYMENT

Company Check

Please make check payable to: EDE Corporation. Checks must be in U.S. funds.

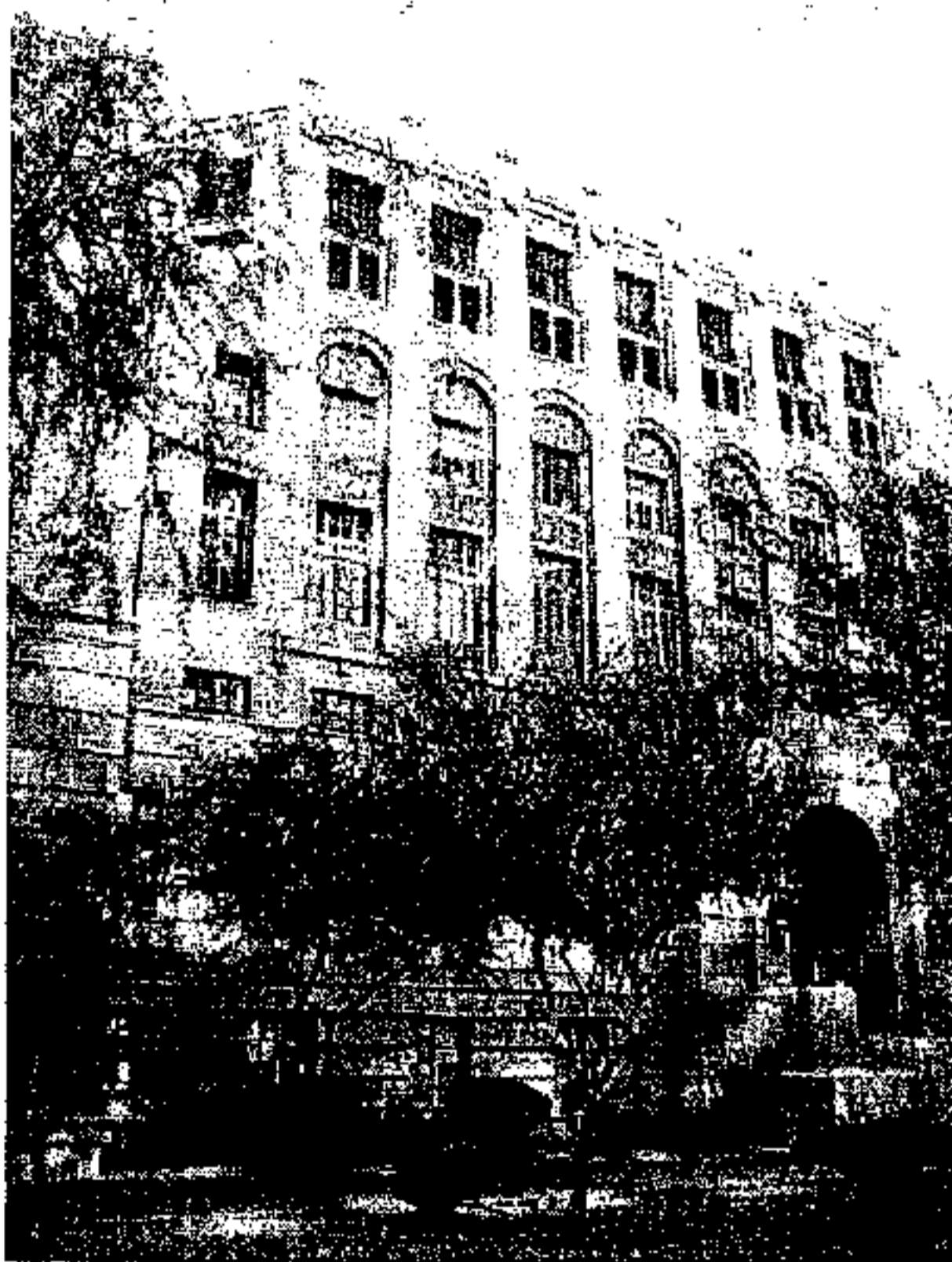


Courthouse Museum Jail Cell Artwork Stabilization Project

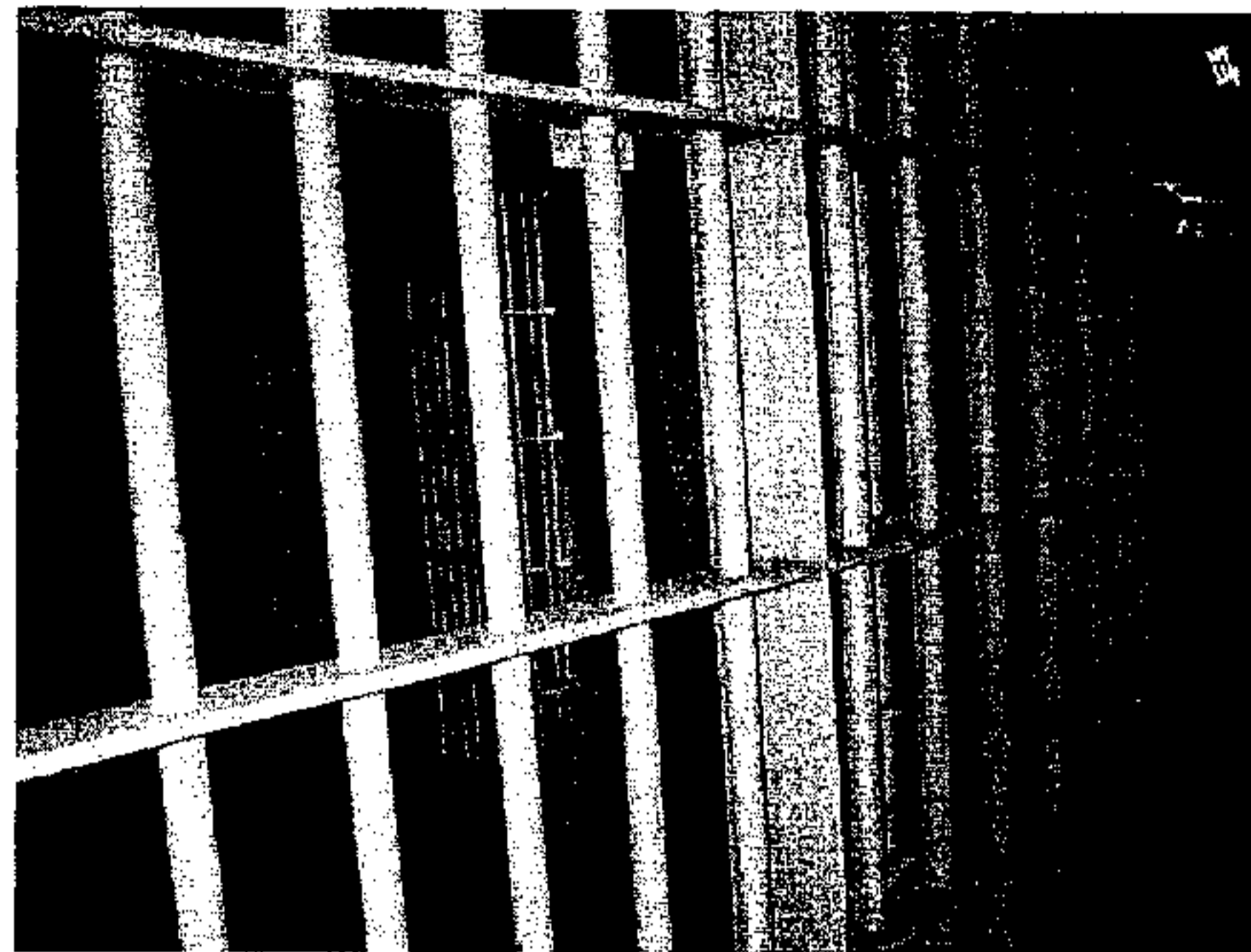
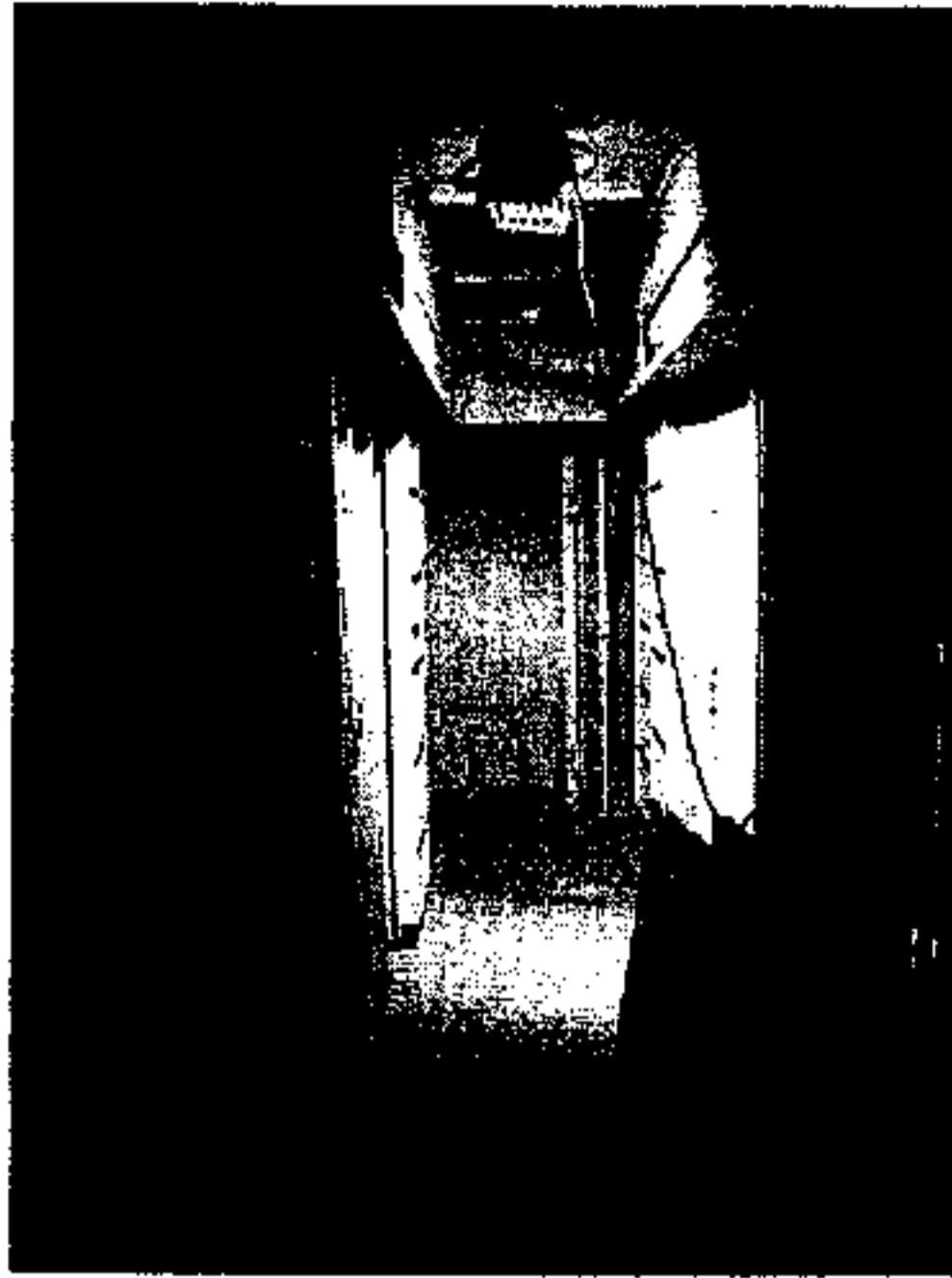
Background: On December 15th, 2009, I met with Laurie Williams, Director of Continuing Legal Education for the Maricopa County Bar Association to examine two historic metal wall panels from the Courthouse Jail. I had spoken previously with an intern during the summer of 2009 regarding conservation issues. The jail cells, located on the 6th floor of the Maricopa County Courthouse, are currently being restored for inclusion in the Justice Learning Center and Museum.

The Museum is envisioned to give visitors a sense of history of Maricopa County, its court cases, and important elements of the Rule of Law. The Historic Courthouse located on the 6th floor of the Courthouse Building, 125 W. Washington, Phoenix, AZ 85003, has been successfully restored to the 1929 era for interpretive purposes. A "Courthouse Experience" program has been developed by the Maricopa County Bar Association (MCBA) and the Superior Court and draws over 3000 students per year.

Volunteer Docents will be used to expand the educational display and learning program into the jail cells in about a year. Robin Hoskins, Maricopa County Superior Court, wrote the application for Arizona Centennial 2012 Legacy Project Designation, developed the budget, and identified partners for the Justice Learning Center and Museum Project. Others involved in the project include Hugh Gallagher, Jury Administrator, Superior Court in Maricopa County, Phoenix and Glenn Davis, Superior Court Judge in Maricopa County.



Conservation Request: Examine and propose a treatment for the panels that will insure their preservation through exhibition and public tours in the Courthouse Museum.



The restored cell block section, including the artwork, will accurately portray significant aspects of history. Currently the panels are located at the back of a cell block area where they have been protected by plastic sheet during the restoration process.



Condition of panels: There are two large wall panels, detached and leaning at the back of one jail cell that is currently undergoing restoration. The panels measure approximately 99.0 cm wide x 230 cm high x 0.5 cm thick. The artwork consists of scratches made through the paint on the panels to expose the metal substrate below. There are miscellaneous designs, mark, letters, and gouges throughout the panels. The most interesting features include a larger and more compositional section on each panel.

Both panels are distorted slightly from their leaning position against the wall. They are dirty from time and the construction project. They are steel and where the metal is exposed there is red rust. Lead paint layers (confirmed with X-ray fluorescence

spectroscopy on flakes picked up from the floor) include gray, pale orange, and pale green colors. The paint is buckled and cupped in several areas where scratches, abrasion and artwork exist. There is active corrosion in numerous areas of both panels.



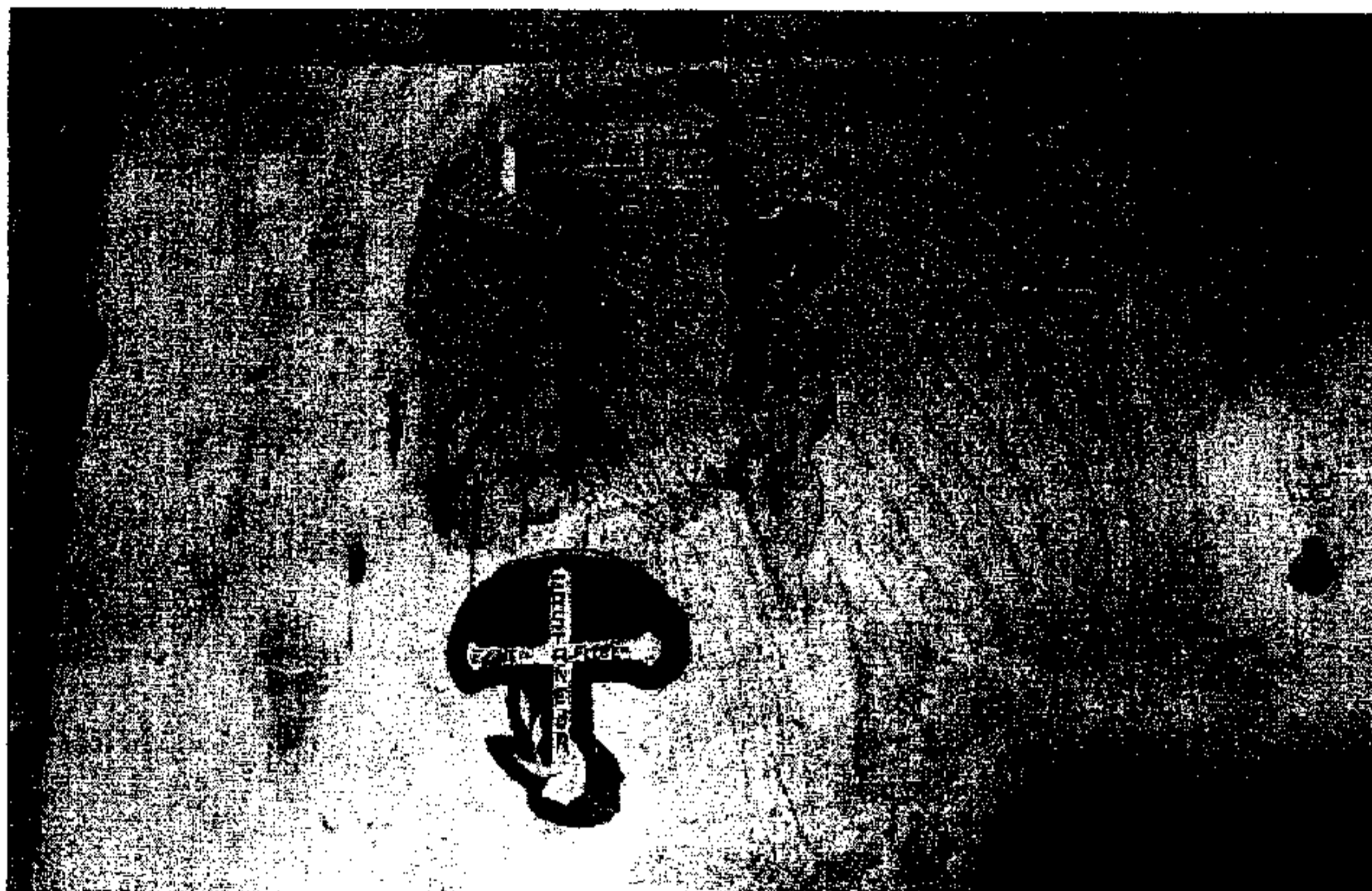
Lifting paint with stain drips



Cracks and lifting paint with rust



Active steel corrosion



The Indian, includes an area of approximately 50 x 50 cm. Eddie Flores Castaeda is the name inscribed in the cross below the Indian image. The words "Lorenzo's dad" are also on this panel.



The Last Supper includes an area of approximately 48 x 16 cm. The words R-GEE King are also on this panel.

Conservation Proposal: The work will involve further Examination and Documentation of the pre-treatment condition of the surfaces. Cleaning of all sides will probably require dry mechanical methods to remove loose particulates; wet surfactant to remove attached grime and soils; and solvent de-wetting and specific deposit removal. A chelating agent to remove the active rust will be tested as well as an alternate tannin solution to determine the safest and most effective treatment for the rust. A corrosion inhibitor solution will be tested, selected and applied. Buckled paint areas will be softened and set down with an appropriate adhesive, perhaps a reversible acrylic mixture. Once stabilized, a wax coating will be applied to the surfaces for protection. Finally, documentation and the results of any analytical testing will be included in a final report.

2 days on-site will be needed. Water, electricity, lighting, drains, and ventilation will be required. An additional 2 days for report preparation will also be needed.

Cost Estimates

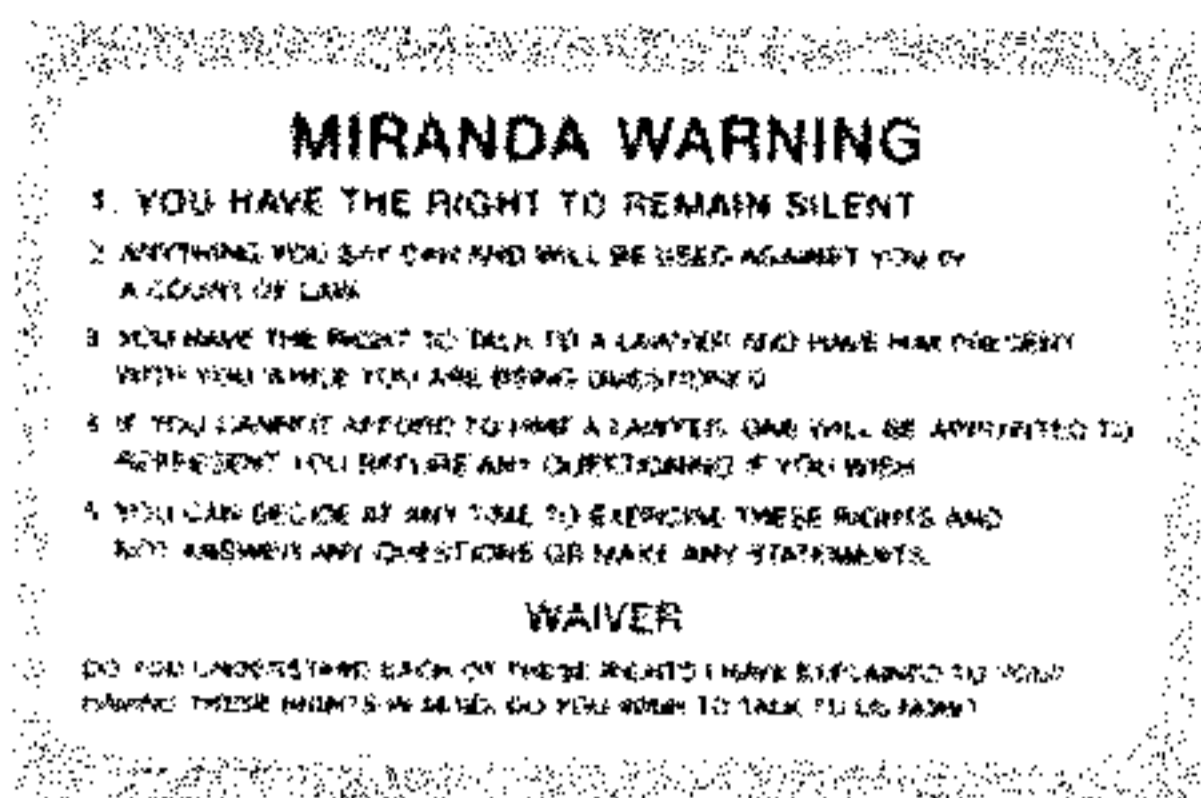
Transportation r/t from Tucson	(@ \$150.00)	
Hotel (one night) for Conservator and students	(@ \$ 140.00 + tax)	
Meals (@ \$53.00 x 2)		
Equipment and Chemicals (@ \$100.00)		
Fees (4 x 600 = 2400.00)		
	Total Estimate	\$3000.00

Dr. Nancy Odegaard, PhD
 Conservator, Fellow-AIC, Fellow-IIC
 321 N. Norton Ave.
 Tucson, AZ 85719

Head of Preservation, Arizona State Museum, University of Arizona, Tucson
 Professor, Co-Director, Heritage Conservation Science Program, Materials Science, UA
 Affiliated Professor, School of Anthropology, UA



Miranda v. Arizona Commemorative Event



The landmark ***Miranda v. Arizona*** United States Supreme Court opinion was issued on June 13, 1966. That decision arose out of the arrest and trial of Ernesto Miranda, who was interrogated, jailed and tried in our Old Historic Courthouse Building.

To commemorate this historic decision and our unique connection to it, on June 13, 2016, fifty years to the day that the decision was issued, the Maricopa County Superior Court, in conjunction with the Maricopa County Justice Museum and Learning Center Foundation, is hosting a special, invitation-only event in the building where these historic events occurred.

Please join us in the Maricopa County Superior Court Ceremonial Courtroom for a lunch hour panel featuring ***Captain Carroll Cooley***, the officer who arrested and interrogated Ernesto Miranda, along with Ninth Circuit Court of Appeals ***Judge Barry Silverman***, a noted authority on Ernesto Miranda and the Miranda case. They will discuss the very interesting details and facts about the arrest and interrogation of Miranda and the Superior Court trial that culminated in one of the most significant constitutional law decisions in modern history.

Miranda v. Arizona 50th Anniversary Commemoration

Monday June 13, 2016
12:15 to 1:15 p.m.

Maricopa County Superior Court
Ceremonial Courtroom (Courtroom 309)
Old Historic Courthouse
125 West Washington
Phoenix, Arizona

Featuring the arresting officer, Captain Carroll Cooley, and United States Court of Appeals Judge Barry Silverman

Lunch will be provided to attendees.

RSVP no later than Monday June 7, 2016
to <http://www.maricopabar.org/event/justicemuseum>

Please note that seating in the Ceremonial Courtroom is limited so an early RSVP is strongly encouraged.